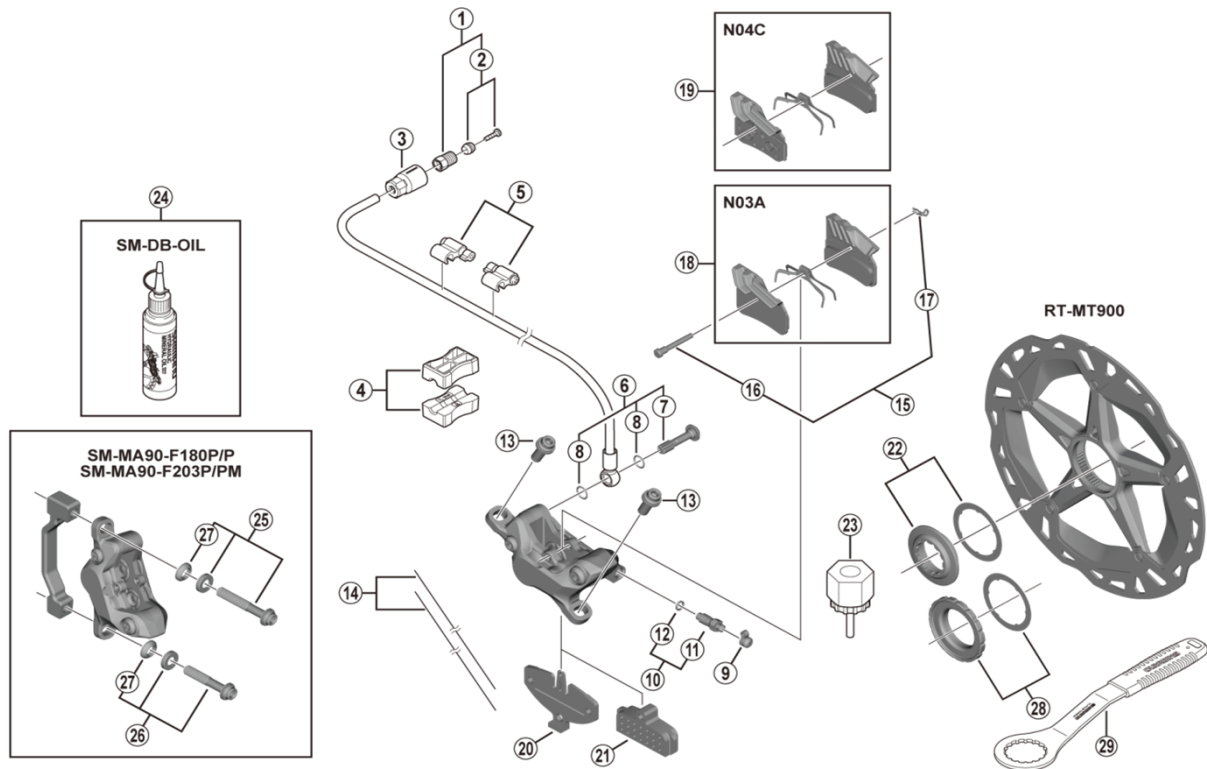


XTR Disc Brake
BR-M9120 Brake Caliper
RT-MT900 Disc Rotor

SM-BH90-SBM Brake Hose



ITEM NO.	SHIMANO CODE NO.	DESCRIPTION
1	Y8JA98010	Connecting Bolt Unit
2	Y8JA98020	Olive & Connector Insert
3	Y1XJ16000	Cover
4	Y8H198030	TL-BH61 Special Tool (2 pcs.)
5	Y83098040	SM-HANG Hose Supporter A & B
6	Y1XD98030	Banjo Bolt & O-Ring
7	Y8JA00010	Banjo Bolt
8	Y8SY28000	O-Ring
9	Y8B214000	Bleed Nipple Cap
10	Y8CL98050	Bleed Nipple & Seal Ring
11	Y8CL24200	Bleed Nipple
12	Y8B511001	O-Ring for Bleed Nipple
13	Y8LF08000	Caliper Fixing Bolt (M6 x 14.6)
14	Y8B298010	Wire (2 pcs.)
15	Y8J798060	Pad Axle & Snap Retainer
16	Y8J710000	Pad Axle
17	Y8J716000	Snap Retainer
18	Y1XD98010	Resin Pad (N03A) w/Fin & Spring
19	Y1XD98020	Metal Pad (N04C) w/Fin & Spring
20	Y8FF18000	Pad Spacer
21	Y8FF19000	Bleeding Spacer
22	Y8K198010	Lock Ring & Washer
23	Y12009230	TL-LR15 Lock Ring Removal Tool
24	Y83998010	Mineral Oil (50 ml)
	Y83998020	Mineral Oil (100 ml)
	Y83998030	Mineral Oil (500 ml)
25	Y8LF98040	Caliper Fixing Bolt Unit (M6 x 36.3) for SM-MA90-F180P/P
	Y8JB98010	Caliper Fixing Bolt Unit (M6 x 38.6) for SM-MA90-F203P/PM
26	Y8LF98050	Caliper Fixing Bolt Unit (M6 x 30.5) for SM-MA90-F180P/P
	Y8JB98020	Caliper Fixing Bolt Unit (M6 x 32.8) for SM-MA90-F203P/PM
27	Y8LF12000	R-Washer A
* 28	Y26L98030	Lock Ring & Washer (Externally serrated type)
* 29	Y13098000	TL-FC36 Lock Ring Removal Tool

Dec.-2018-4375B
 © Shimano Inc. I

Specifications are subject to change without notice.

SHIMANO