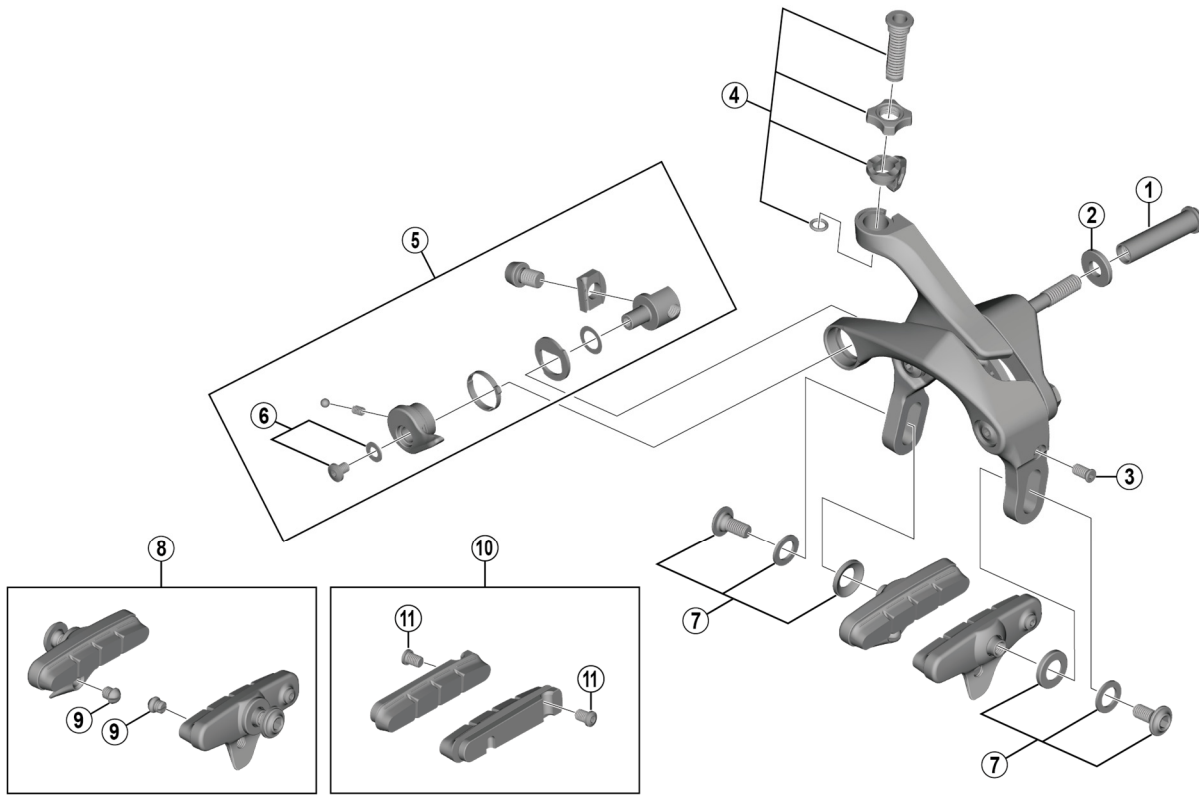


ULTEGRA Caliper Brake BR-R8000



BR-R9100

ITEM NO.	SHIMANO CODE NO.	DESCRIPTION	INTERCHANGEABILITY	
1	Y8G615000	Pivot Nut (10.5 mm) for Front / Rear	A	
	Y8G615010	Pivot Nut (12.5 mm) for Front	A	
	Y85574310	Pivot Nut (18.0 mm) for Front	A	
	Y8A023200	Pivot Nut (27.0 mm) for Front	A	
	Y8A023210	Pivot Nut (32.0 mm) for Front	A	
2	Y85850120	Set Washer	B	
3	Y8PP09000	EC-Bolt	A	
4	Y8PP98010	Cable Adjusting Bolt Unit	A	
5	Y8RU98010	Quick Release Assembly		
6	Y8PP98030	Quick Release Fixing Bolt & Washer	A	
7	Y8G698090	Shoe Fixing Bolt Unit (M5 x 11.2)		
8	Y8LA98030	R55C4 Cartridge-Type Brake Shoe Set (Pair)	B	
9	Y8FA16000	Tire Guide	A	
10	Y8L298060	R55C4 Cartridge-Type Brake Shoes & Fixing Bolts (Pair)	A	
	Y8L298070	R55C4 Cartridge-Type Brake Shoes & Fixing Bolts (Pair) for Carbon Rim	A	
	Y8PP98060	R55C4-A Cartridge-Type Brake Shoes (-1 mm thinner shoe) & Fixing Bolts (Pair) for Carbon Rim	A	
11	Y8L227000	Fixing Bolt (M4 x 5.5)	A	

A: Same parts.

B: Parts are usable, but differ in materials, appearance, finish, size, etc.

Absence of mark indicates non-interchangeability.

Specifications are subject to change without notice.

May-2017-4251

© Shimano Inc. I

SHIMANO