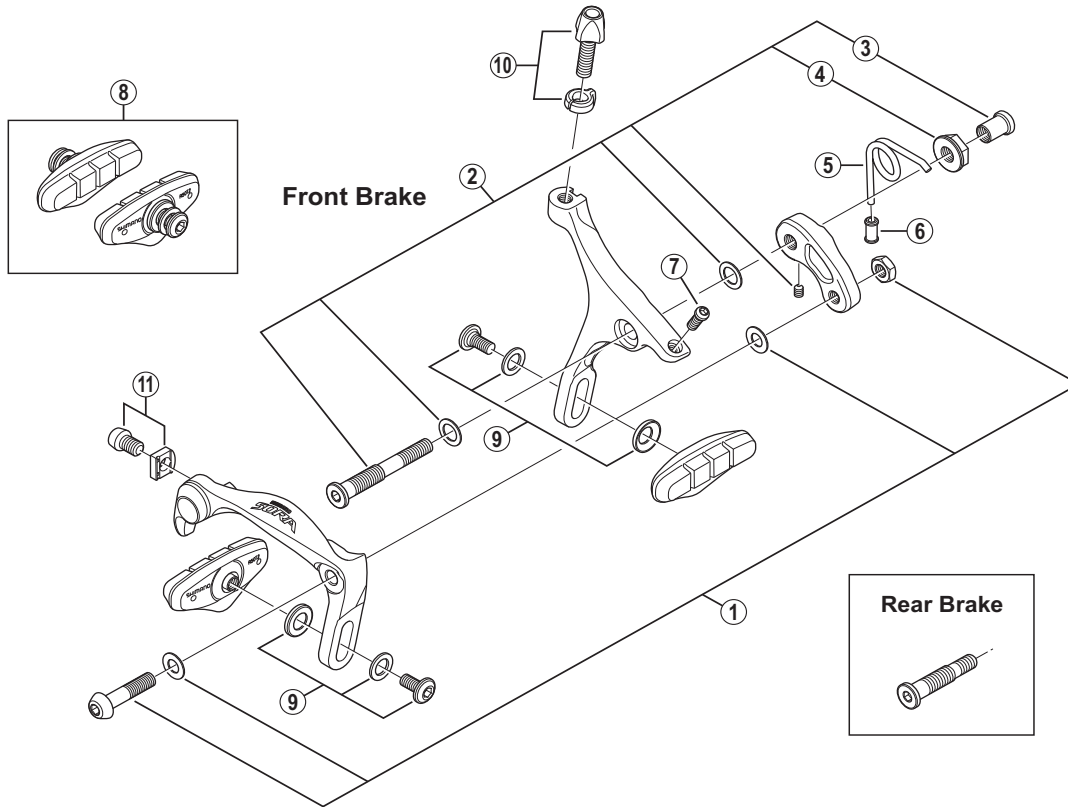


SORA Caliper Brake BR-3500



ITEM NO.	SHIMANO CODE NO.	DESCRIPTION	INTERCHANGEABILITY	
			BR-4600	BR-3400
1	Y8JY98010	Arm Bolt Unit (M6 x 26.5)	A	
	Y8JY98020	Front Pivot Bolt Assembly {Pivot Bolt: 50.4 mm (2") / Pivot Nut: 10.5 mm}	A	
	Y8JY98030	Front Pivot Bolt Assembly {Pivot Bolt: 50.4 mm (2") / Pivot Nut: 12.5 mm}	A	
2	Y8JY98040	Front Pivot Bolt Assembly {Pivot Bolt: 50.4 mm (2") / Pivot Nut: 18.0 mm}	A	
	Y8JY98050	Front Pivot Bolt Assembly {Pivot Bolt: 50.4 mm (2") / Pivot Nut: 27.0 mm}	A	
	Y8JY98060	Rear Pivot Bolt Assembly {Pivot Bolt: 35.7 mm (1-13/32") / Pivot Nut: 10.5 mm}	A	
	Y85575110	Pivot Nut (10.5 mm) for Front/Rear	A	A
3	Y85575020	Pivot Nut (12.5 mm) for Front	A	A
	Y85574010	Pivot Nut (18.0 mm) for Front	A	A
	Y8A023000	Pivot Nut (27.0 mm) for Front	A	A
4	Y8E604000	Lock Nut	A	B
5	Y8JY27000	Arm Spring	A	
6	Y8BY08000	Spring Guide	A	A
7	Y8JY10000	EC-Screw (M4 x 10.2)	A	
*	Y8MG98090	R50T5 Brake Shoe Set (5 pairs)		
*	Y8L998010	R50T4 Brake Shoe Set (5 pairs)		
9	Y8JY98080	Shoe Fixing Bolt Unit (M5 x 11.2)	A	B
10	Y8JY98090	Cable Adjusting Bolt (M6 x 21.6) & Clip	A	
11	Y8BT98010	Cable Fixing Bolt (M6 x 9) & Plate	A	A

A: Same parts.

B: Parts are usable, but differ in materials, appearance, finish, size, etc.

Absence of mark indicates non-interchangeability.

Specifications are subject to change without notice.

Aug.-2015-3411A

© Shimano Inc. I

SHIMANO