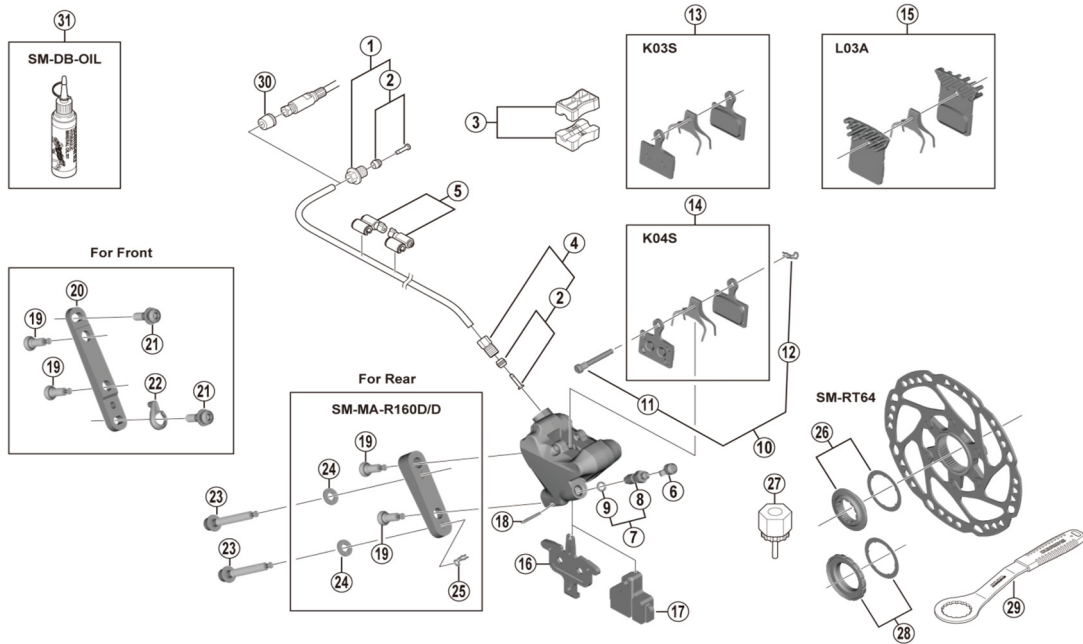


TIAGRA Disc Brake
BR-4770 Brake Caliper
SM-RT64 Disc Rotor

SM-BH90-JK-SSR Brake Hose
SM-BH90-JK-SS Brake Hose



ITEM NO.	SHIMANO CODE NO.	DESCRIPTION
1	Y8RD98010	Flange Connecting Bolt Unit (M9/Black)
2	Y8JA98020	Olive & Connector Insert
3	Y8H198030	TL-BH61 Shimano original tool (2 pcs.)
4	Y8JA98010	Connecting Bolt Unit (M8/Black)
5	Y83098040	SM-HANG Hose Supporter A & B
6	Y8B214000	Bleed Nipple Cap
7	Y8CL98050	Bleed Nipple & Seal Ring
8	Y8CL24200	Bleed Nipple
9	Y8B511001	O-Ring for Bleed Nipple
10	Y2EN98010	Pad Axle & Snap Retainer
11	Y2EN03000	Pad Axle
12	Y8J716000	Snap Retainer
13	Y8Y898010	Resin Pad (K03S) & Spring
14	Y8N398020	Metal Pad (K04S) & Spring
15	Y8PU98040	Resin Pad (L03A) w/Fin & Spring
16	Y8N218000	Pad Spacer
17	Y8N219000	Bleeding Spacer
18	Y8N207000	Bolt Fixing Pin
19	Y8N206000	Caliper Fixing Bolt B
20	Y8N230000	Front Caliper Mount Bracket
21	Y8N204000	Caliper Fixing Bolt A
22	Y8N205000	Snap Ring
23	Y8N208000	Caliper Fixing Bolt C for 10 mm Rear mount thickness
	Y8N208050	Caliper Fixing Bolt C for 15 mm Rear mount thickness
	Y8N208010	Caliper Fixing Bolt C for 20 mm Rear mount thickness
	Y8N208020	Caliper Fixing Bolt C for 25 mm Rear mount thickness
	Y8N208030	Caliper Fixing Bolt C for 30 mm Rear mount thickness
	Y8N208040	Caliper Fixing Bolt C for 35 mm Rear mount thickness
24	Y8NU02000	Washer for R160 Adapter
25	Y8NU03000	Snap Retainer
26	Y8K998010	Lock Ring & Washer
27	Y12009230	TL-LR15 Lock Ring Removal Tool
28	Y24698030	Lock Ring & Washer (Externally serrated type)
29	Y13098000	TL-FC36 Lock Ring Removal Tool
30	Y8H802000	Hose Cover for easy hose joint system, not used with easy hose joint direct system
31	Y83998010	Mineral Oil (50 ml)
	Y83998020	Mineral Oil (100 ml)
	Y83998030	Mineral Oil (500 ml)