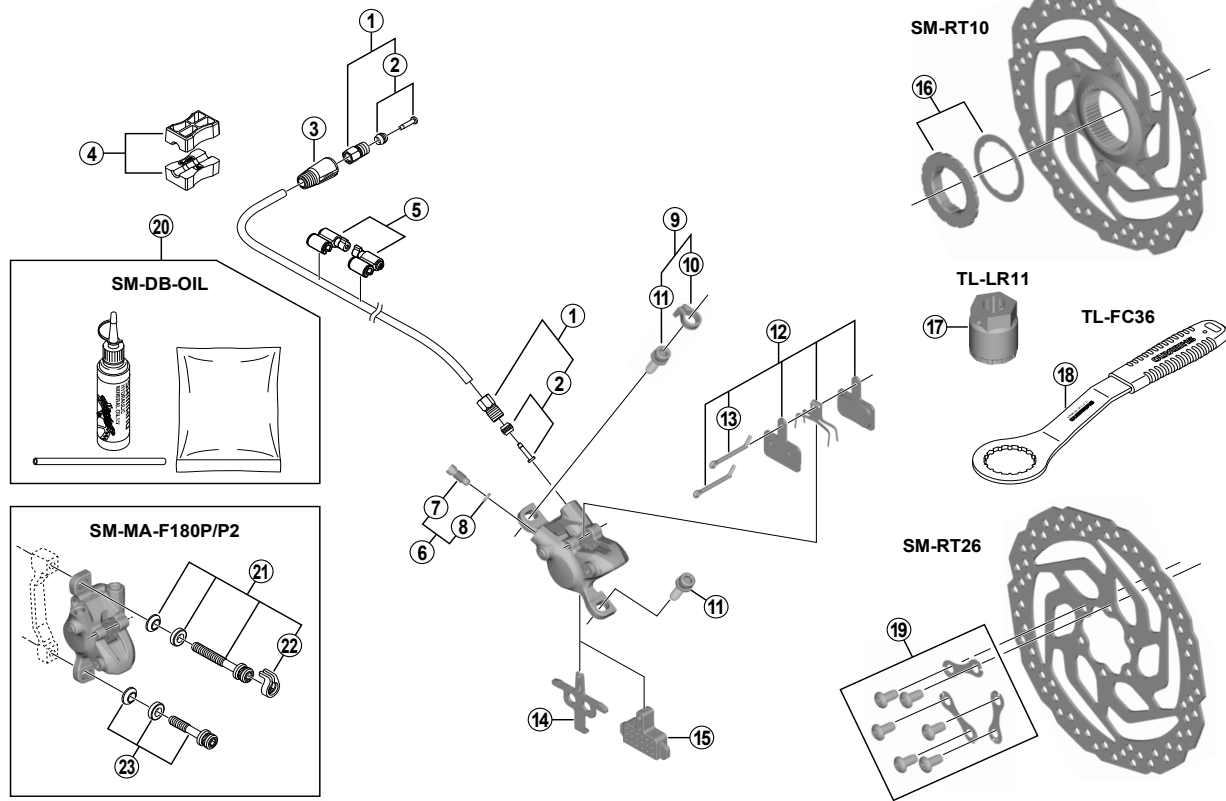


Disc Brake
BR-M315 Brake Caliper
SM-BH59 Brake Hose

SM-RT10 Disc Rotor/Center Lock
SM-RT26 Disc Rotor/6-Bolt



BR-M315

ITEM NO.	SHIMANO CODE NO.	DESCRIPTION	INTERCHANGEABILITY
1	Y8AL98020	Connecting Bolt Unit	A
2	Y8H298040	Olive & Connector Insert	A
3	Y8H203210	Cover	A
4	Y8H198030	TL-BH61 Shimano original tool (2 pcs.)	A
5	Y83098040	SM-HANG Hose Supporter A & B	A
6	Y8VZ98010	Bleed Screw & O-Ring	A
7	Y8VZ07000	Bleed Screw	A
8	Y8B511000	O-Ring	A
9	Y8DS98010	Caliper Fixing Bolt (M6 x 18.7) & Snap Ring	A
10	Y8C511000	Snap Ring	A
11	Y8C509020	Caliper Fixing Bolt (M6 x 18.7)	A
12	Y8C998050	Resin Pad (B01S) & Spring w/Split Pin	
13	Y8DB06100	Split Pin	A
14	Y8PE03000	Pad Spacer	B
15	Y8FZ05000	Bleeding Spacer	A
16	Y8PW98020	Lock Ring & Washer	B
17	Y8PW04100	TL-LR11 Lock Ring Removal Tool	A
18	Y13098000	TL-FC36 Lock Ring Removal Tool	A
19	Y8NX98010	Rotor Fixing Bolt & Lock Washer	A
20	Y83998010	Mineral Oil Bleed Kit (50 ml)	A
21	Y8G498020	Caliper Fixing Bolt Unit (M6 x 37.9)	A
22	Y81703000	Snap Ring	A
23	Y8G498030	Caliper Fixing Bolt Unit (M6 x 32.1)	A

A: Same parts.

B: Parts are usable, but differ in materials, appearance, finish, size, etc.

Absence of mark indicates non-interchangeability.

Specifications are subject to change without notice.

Apr.-2016-3985

© Shimano Inc. I

SHIMANO