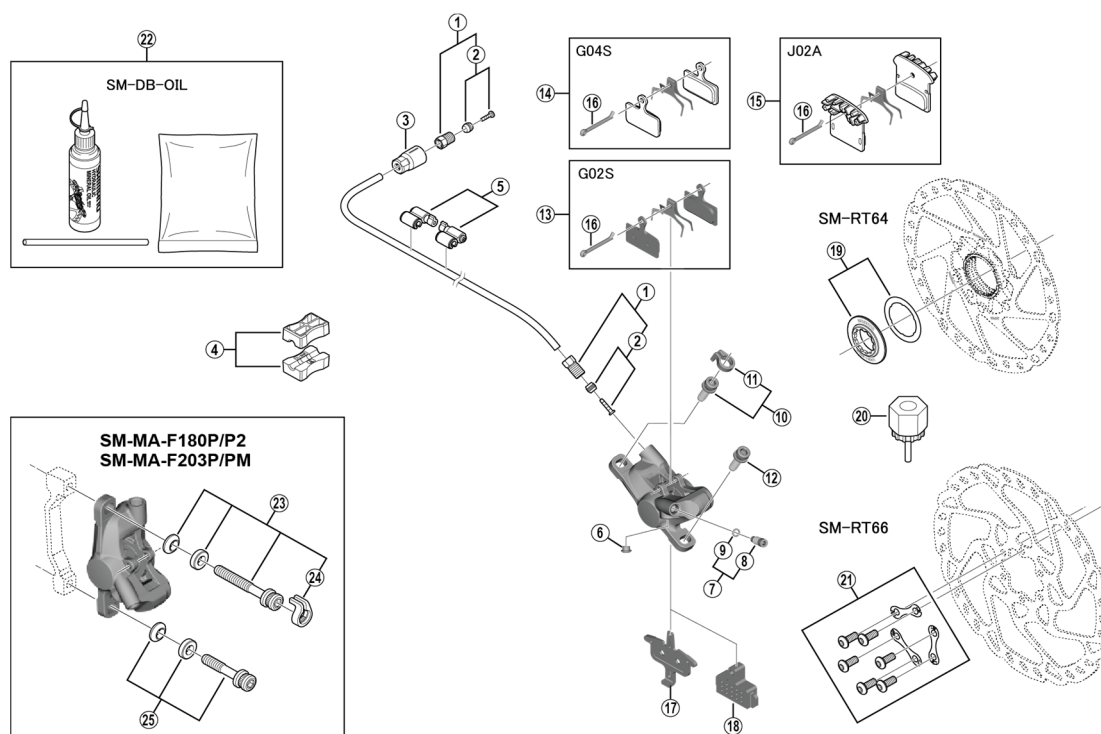


DEORE Disc Brake
BR-M6000 Brake Caliper
SM-RT64 Disc Rotor/Center Lock

SM-BH90-ss / SM-BH59-ss Brake Hose
SM-RT66 Disc Rotor/6-Bolt



ITEM NO.	SHIMANO CODE NO.	DESCRIPTION
*	Y8KH98010	Connecting Bolt Unit for SM-BH90-SS
	Y8H298030	Connecting Bolt Unit for SM-BH59-SS
*	Y8JA98020	Olive & Connector Insert for SM-BH90-SS
	Y8H298040	Olive & Connector Insert for SM-BH59-SS
3	Y8JA07010	Cover
4	Y8H198030	TL-BH61 Special Tool (2 pcs.)
5	Y83098040	SM-HANG Hose Supporter A & B
6	Y88F06000	Bleed Boss Cap
7	Y8VZ98010	Bleed Screw & O-Ring
8	Y8VZ07000	Bleed Screw
9	Y8B511000	O-Ring
10	Y8DS98010	Caliper Fixing Bolt (M6 x 18.7) & Snap Ring
11	Y8C511000	Snap Ring
12	Y8C509020	Caliper Fixing Bolt (M6 x 18.7)
13	Y8WW98020	Resin Pad (G02S) & Spring w/Split Pin
14	Y8MY98010	Metal Pad (G04S) & Spring w/Split Pin
15	Y8LW98040	Resin Pad (J02A) w/Fin & Spring w/Split Pin
16	Y8DB06100	Split Pin
17	Y84E03000	Pad Spacer
18	Y8J712100	Bleeding Spacer
19	Y8K998010	Lock Ring & Washer
20	Y12009230	TL-LR15 Lock Ring Removal Tool
21	Y8KT98010	Rotor Fixing Bolt & Lock Washer
22	Y83998010	Mineral Oil Bleed Kit (50 ml)
23	Y8G498020	Caliper Fixing Bolt Unit (M6 x 37.9) for SM-MA-F180P/P2
	Y8J498010	Caliper Fixing Bolt Unit (M6 x 40.2) for SM-MA-F203P/PM
24	Y81703000	Snap Ring
25	Y8G498030	Caliper Fixing Bolt Unit (M6 x 32.1) for SM-MA-F180P/P2
	Y8J498020	Caliper Fixing Bolt Unit (M6 x 34.4) for SM-MA-F203P/PM

Aug.-2017-4192A
 © Shimano Inc. I