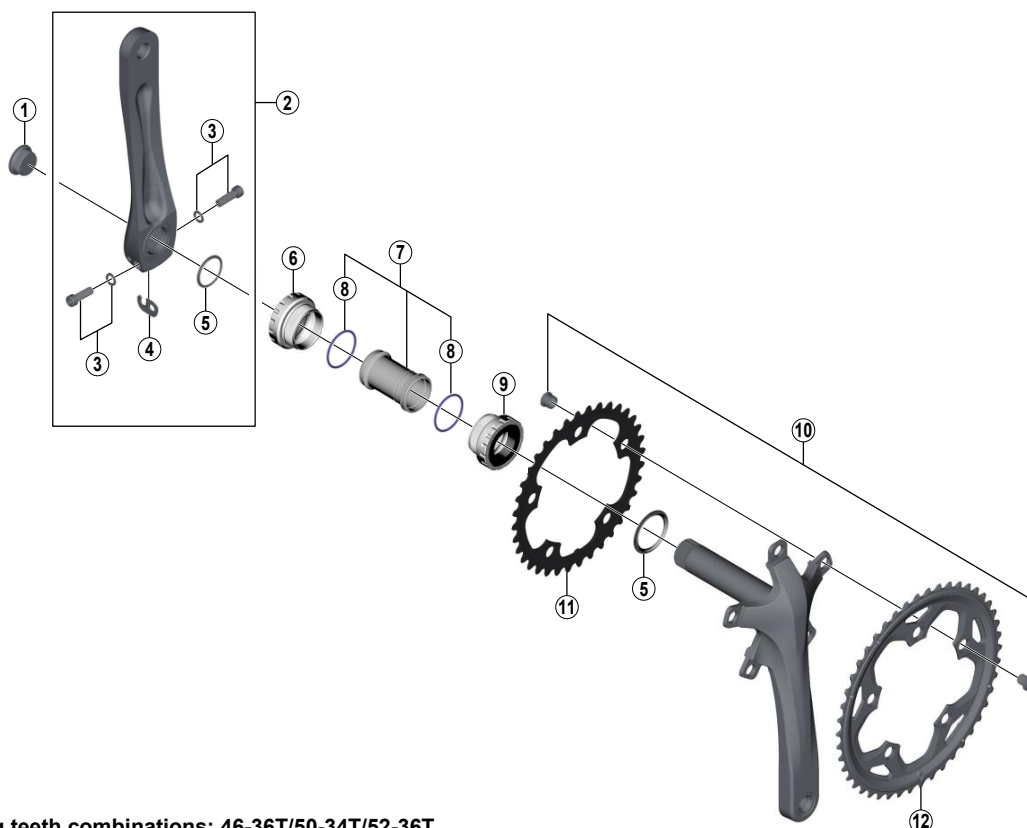


# Crankset FC-RS500 SM-BB4600



- Chaining teeth combinations: 46-36T/50-34T/52-36T
- Bolt circle diameter: 110 mm

FC-R565  
FC-4650

ITEM NO.	SHIMANO CODE NO.	DESCRIPTION	INTERCHANGEABILITY	
			A	B
1	Y1KS13000	Crank Arm Fixing Bolt	A	A
2	Y1MT98010	Left Hand Crank Arm 165 mm (Silver)	A	B
	Y1MT98020	Left Hand Crank Arm 165 mm (Black)	A	B
	Y1MT98030	Left Hand Crank Arm 170 mm (Silver)	A	B
	Y1MT98040	Left Hand Crank Arm 170 mm (Black)	A	B
	Y1MT98050	Left Hand Crank Arm 172.5 mm (Silver)	A	B
	Y1MT98060	Left Hand Crank Arm 172.5 mm (Black)	A	B
	Y1MT98070	Left Hand Crank Arm 175 mm (Silver)	A	B
	Y1MT98080	Left Hand Crank Arm 175 mm (Black)	A	B
3	Y1KS98030	Clamp Bolt (M6 x 19) & Washer	A	A
4	Y1GE98050	Plate	A	A
5	Y1F316000	Ring	A	A
6	Y1MH98050	Left Hand Adapter (B.C.1.37" x 24T) English Thread	A	A
7	Y1MH98070	Inner Cover & O-Ring	A	A
8	Y1TF21000	O-Ring	A	A
9	Y1MH98080	Right Hand Adapter (B.C.1.37" x 24T) English Thread	A	A
10	Y1NB98040	Gear Fixing Bolt (M8 x 8.5) & Nut (5 sets)	A	A
11	Y1PR34010	Chaining 34T-MH for 50-34T (Silver)		
	Y1PR34000	Chaining 34T-MH for 50-34T (Black)		
	Y1PR36010	Chaining 36T-MJ for 46-36T/52-36T (Silver)		
	Y1PR36000	Chaining 36T-MJ for 46-36T/52-36T (Black)		
12	Y1PR98010	Chaining 46T-MJ for 46-36T (Silver)		
	Y1PR98020	Chaining 46T-MJ for 46-36T (Black)		
	Y1PR98030	Chaining 50T-MH for 50-34T (Silver)		
	Y1PR98040	Chaining 50T-MH for 50-34T (Black)		
	Y1PR98050	Chaining 52T-MJ for 52-36T (Silver)		
	Y1PR98060	Chaining 52T-MJ for 52-36T (Black)		

A: Same parts.

B: Parts are usable, but differ in materials, appearance, finish, size, etc.

Absence of mark indicates non-interchangeability.

Jul.-2014-3679

© Shimano Inc. H

Specifications are subject to change without notice.

# SHIMANO