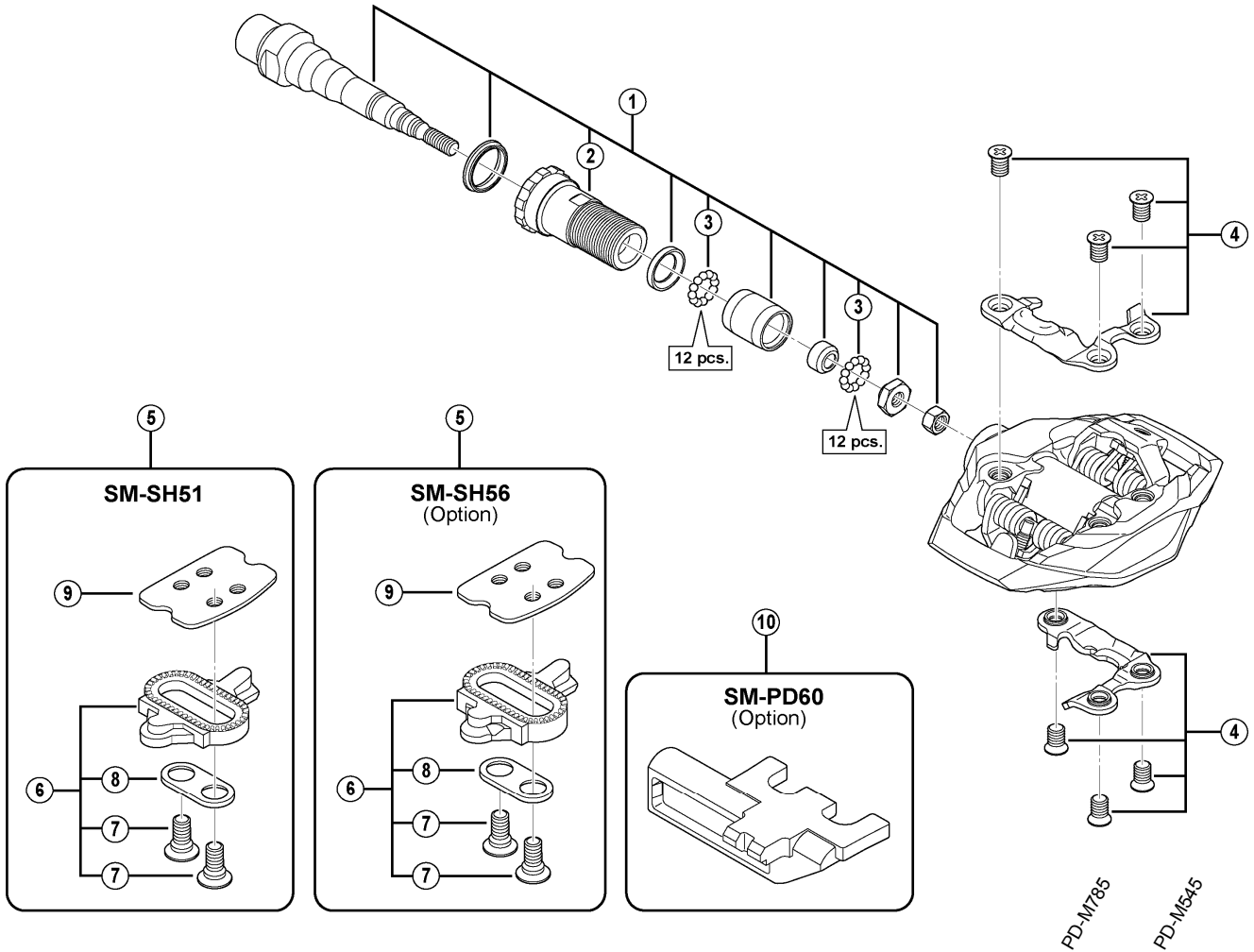


SLX SPD Pedals

PD-M530-L Black Version

PD-M530-W White Version



ITEM NO.	SHIMANO CODE NO.	DESCRIPTION	INTERCHANGEABILITY	
* 1	Y41P98030	Pedal Axle Assembly (Right / B.C.9/16" x 20T.P.I.)		
	Y41P98020	Pedal Axle Assembly (Left / B.C.9/16" x 20T.P.I.)		
2	Y43Z13100	Lock Bolt (Right)		
	Y43Z14100	Lock Bolt (Left)		
3	Y41N98030	Steel Ball (3/32") 62 pcs.	A	A
4	Y46K98030	Body Cover (Right) & Fixing Bolts (M5)	A	
	Y46K98040	Body Cover (Left) & Fixing Bolts (M5)	A	
5	Y42498200	SM-SH51 Cleat Set (Single Release Mode / Pair)	A	A
	Y41S98090	SM-SH56 Cleat Set (Multiple Release Mode / Pair)	A	A
6	Y42498201	SM-SH51 Cleat Set w/o Cleat Nut (Single Release Mode / Pair)	A	A
	Y41S98100	SM-SH56 Cleat Set w/o Cleat Nut (Multiple Release Mode / Pair)	A	A
7	Y41704030	Cleat Fixing Bolt (1 pc.)	A	A
8	Y42423000	Cleat Adapter (1 pc.)	A	A
9	Y40N01000	Cleat Nut (1 pc.)	A	A
10	Y40Z98010	SM-PD60 Reflector Unit (Pair/Option)	A	
	Y40Z98020	SM-PD60 Reflector Unit (AS/Pair/Option)	A	

A: Same parts.

B: Parts are usable, but differ in materials, appearance, finish, size, etc.

Absence of mark indicates non-interchangeability.

Mar.-2013-3203B

© Shimano Inc. A

Specifications are subject to change without notice.

SHIMANO