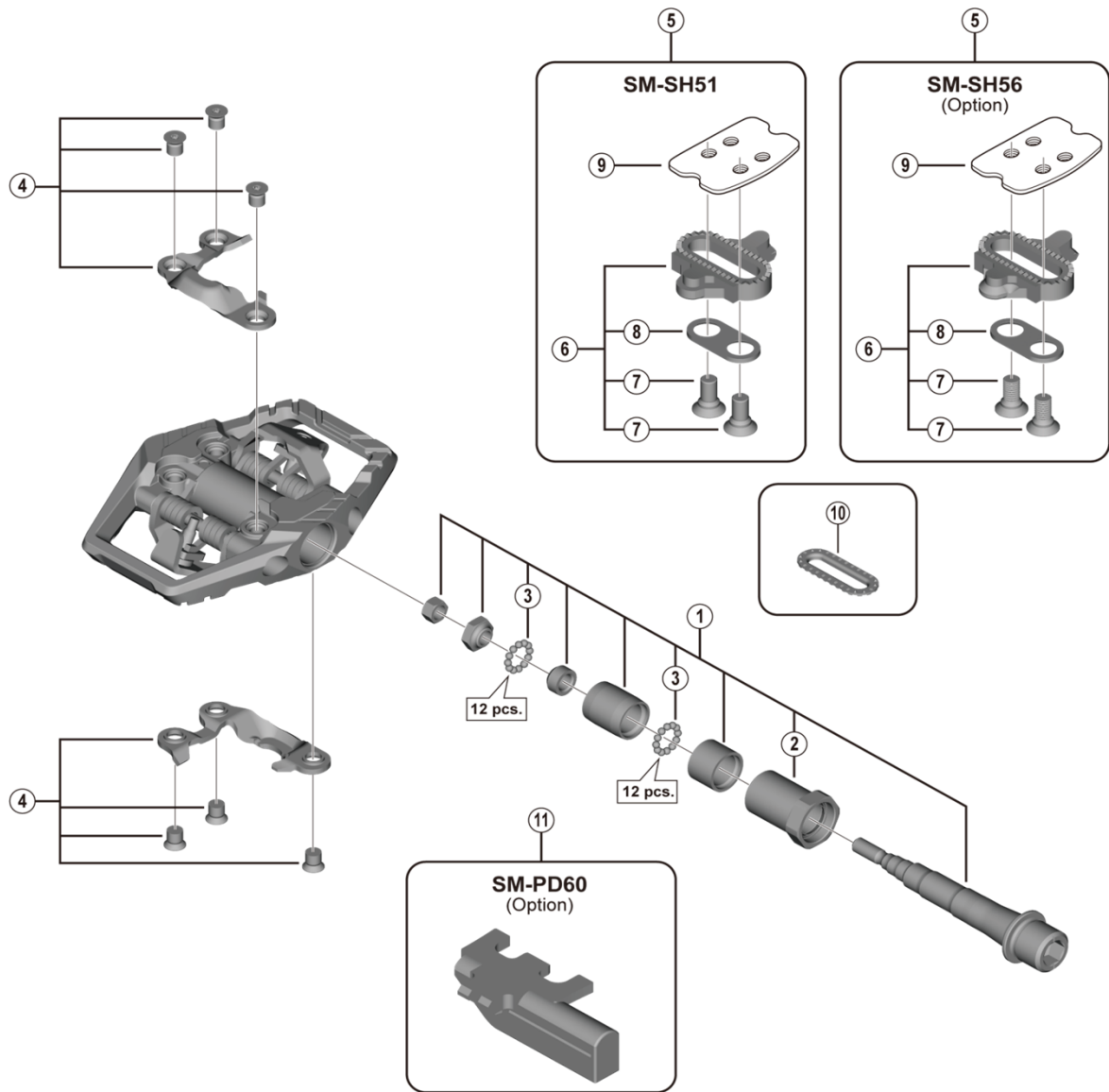


# DEORE XT SPD Pedals PD-M8120



ITEM NO.	SHIMANO CODE NO.	DESCRIPTION	INTERCHANGEABILITY		
			PD-M8020	PD-M8040	PD-M8140
1	YL8L98010	Pedal Axle Assembly (Right / B.C.9/16" x 20T.P.I.)			
	YL8L98020	Pedal Axle Assembly (Left / B.C.9/16" x 20T.P.I.)			
2	YL8L98030	Lock Bush (Right)			
	YL8L98040	Lock Bush (Left)			
3	Y41N98030	Steel Ball (3/32") 62 pcs.	A	A	A
4	Y46K98030	Body Cover (Right) & Fixing Bolts (M5)	A		
	Y46K98040	Body Cover (Left) & Fixing Bolts (M5)	A		
5	Y42498220	SM-SH51 Cleat Set (Single Release Mode / Pair)	A		
	Y41S98092	SM-SH56 Cleat Set (Multiple Release Mode / Pair)	A		
6	Y42498201	SM-SH51 Cleat Set w/o Cleat Nut (Single Release Mode / Pair)	A		
	Y41S98100	SM-SH56 Cleat Set w/o Cleat Nut (Multiple Release Mode / Pair)	A		
7	Y41704030	Cleat Fixing Bolt (1 pc.)	A		
8	Y42423000	Cleat Adapter (1 pc.)	A		
9	YL0E04000	Cleat Nut (1 pc.)	A		
10	YL8098030	SPD Cleat Spacer (2 pcs.)	A		
11	Y40Z98010	SM-PD60 Reflector Unit Standard/AS(Pair/Option)	A		

A: Same parts.

B: Parts are usable, but differ in materials, appearance, finish, size, etc.

Absence of mark indicates non-interchangeability.

Specifications are subject to change without notice.

Jun.-2019-4515

© Shimano Inc. I

# SHIMANO