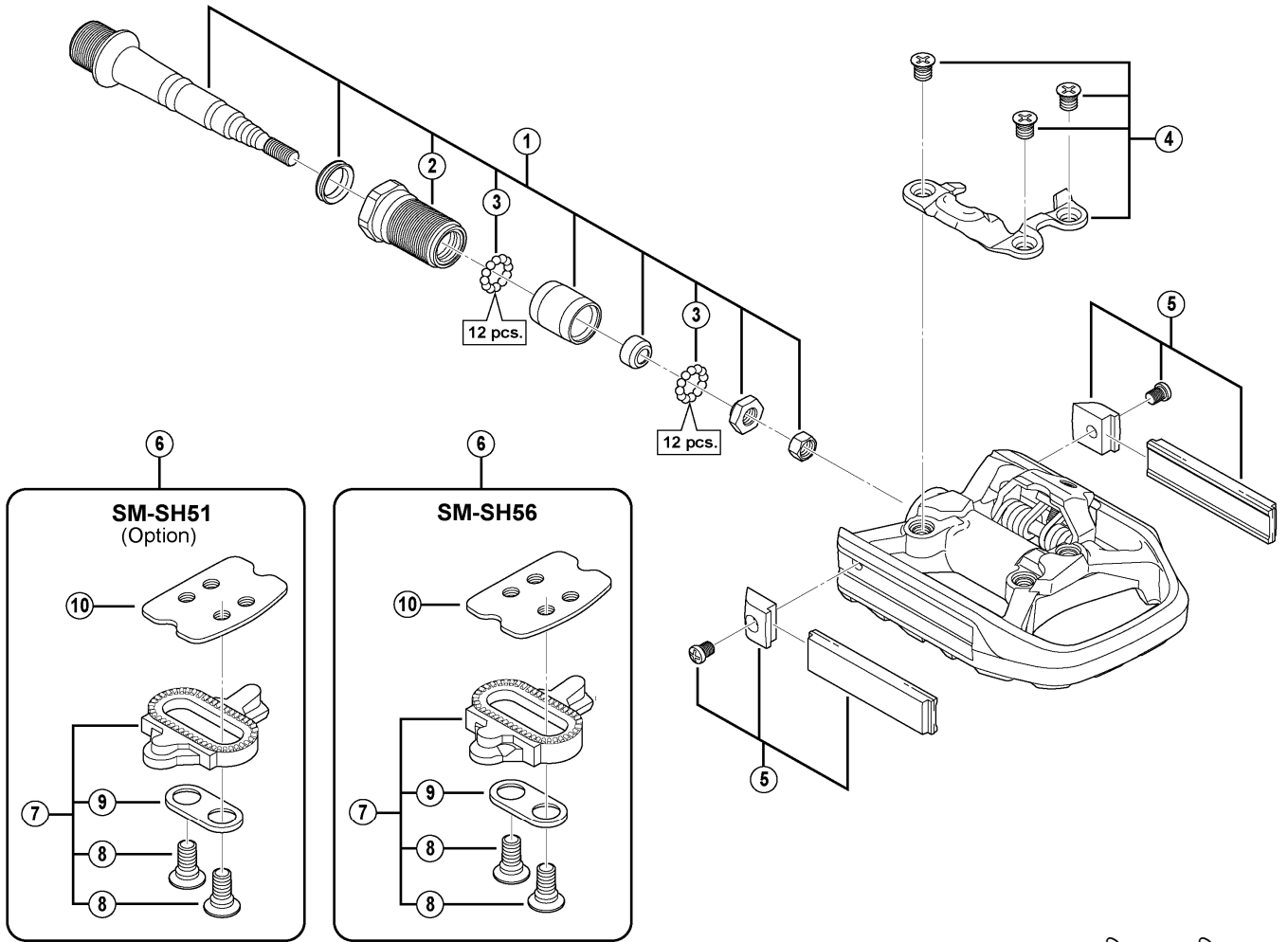


DEORE XT SPD Pedals

PD-T780



PD-M780

PD-M530

| ITEM NO. | SHIMANO CODE NO. | DESCRIPTION | INTERCHANGEABILITY | | |
|----------|------------------|--|--------------------|---|--|
| | | | | | |
| 1 | Y46P98040 | Pedal Axle Assembly (Right / B.C.9/16" x 20T.P.I.) | B | | |
| | Y46P98020 | Pedal Axle Assembly (Left / B.C.9/16" x 20T.P.I.) | B | | |
| 2 | Y45E98030 | Lock Bolt (Right) | A | | |
| | Y45E98040 | Lock Bolt (Left) | A | | |
| 3 | Y41N98030 | Steel Ball (3/32") 62 pcs. | A | A | |
| 4 | Y46K98030 | Body Cover (Right) & Fixing Bolts (M5) | A | A | |
| | Y46K98040 | Body Cover (Left) & Fixing Bolts (M5) | A | A | |
| 5 | Y46P98030 | Reflector Unit | | | |
| 6 | Y42498200 | SM-SH51 Cleat Set (Single Release Mode / Pair) | A | A | |
| | Y41S98090 | SM-SH56 Cleat Set (Multiple Release Mode / Pair) | A | A | |
| 7 | Y42498201 | SM-SH51 Cleat Set w/o Cleat Nut (Single Release Mode / Pair) | A | A | |
| | Y41S98100 | SM-SH56 Cleat Set w/o Cleat Nut (Multiple Release Mode / Pair) | A | A | |
| 8 | Y41704030 | Cleat Fixing Bolt (1 pc.) | A | A | |
| 9 | Y42423000 | Cleat Adapter (1 pc.) | A | A | |
| 10 | Y40N01000 | Cleat Nut (1 pc.) | A | A | |

A: Same parts.

B: Parts are usable, but differ in materials, appearance, finish, size, etc.

Absence of mark indicates non-interchangeability.

Mar.-2013-3196A

© Shimano Inc. A

Specifications are subject to change without notice.

SHIMANO