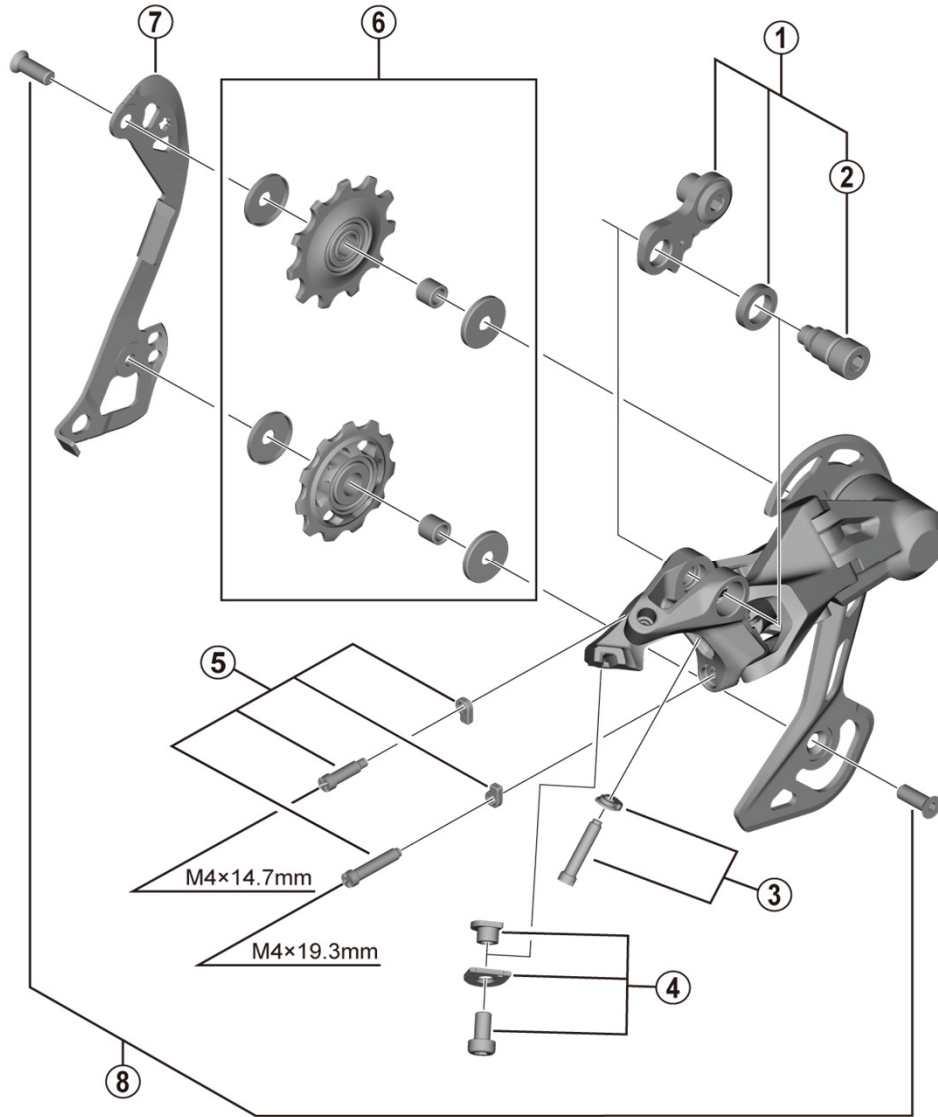


DEORE Rear Derailleur

RD-M4120-SGS 11/10-speed



ITEM NO.	SHIMANO CODE NO.	DESCRIPTION	INTERCHANGEABILITY	
			RD-M5120	RD-M6000-GS
1	Y3HM98020	Bracket Axle Unit (for normal type)	A	B
2	Y3HM000F0	B-Axle 2 (for Direct Mount type)	A	
3	Y3HM98040	End Adjust Screw (M4 x 19.3) & Plate	A	B
4	Y3HM98050	Cable Fixing Bolt Unit	A	
5	Y3HM98060	Stroke Adjusting Screws & Plate	A	B
6	Y3HM98010	Tension & Guide Pulley Set	A	B
7	Y3HM000B0	Inner Plate (SGS)	A	A
8	Y3HM98080	Pulley Screw (M5 x 13.7) 2 pcs.	A	B

A: Same parts.

B: Parts are usable, but differ in materials, appearance, finish, size, etc.

Absence of mark indicates non-interchangeability.

Specifications are subject to change without notice.

May-2020-4674

© Shimano Inc. I

SHIMANO