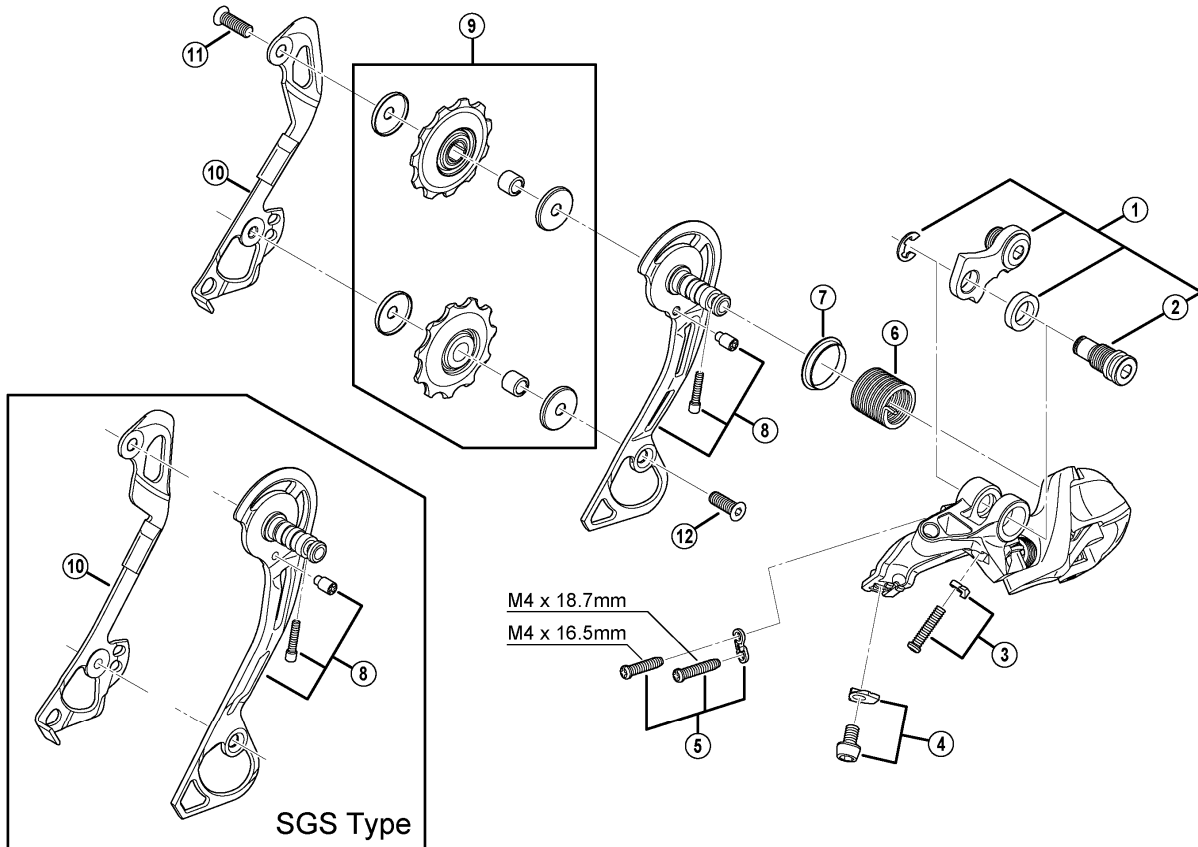


DEORE Rear Derailleur (10-speed)

RD-M610-S (GS/SGS) Silver Version (Long Cage/Super Long Cage)

RD-M610-L (GS/SGS) Black Version (Long Cage/Super Long Cage)



ITEM NO.	SHIMANO CODE NO.	DESCRIPTION	INTERCHANGEABILITY		
1	Y50Y98010	Bracket Axle Unit (for normal type)	A		
2	Y50Y17000	B-Axle2 (for Direct Mount type)	A		
3	Y5XP98030	B-Tension Adjusting Screw (M 4x 18) & Plate	A		
4	Y5X798010	Cable Fixing Bolt (M5 x 8.5) & Plate	B		
5	Y5W798020	Stroke Adjusting Screws & Plate	A		
6	Y5W722000	P-Tension Spring	B		
7	Y5UC14000	P-Seal Ring	A		
8	Y50Y98020	Outer Plate Assembly (Silver/GS-Type)	A		
	Y50Y98030	Outer Plate Assembly (Silver/SGS-Type)	A		
	Y50H98010	Outer Plate Assembly (Black/GS-Type)	B		
	Y50H98020	Outer Plate Assembly (Black/SGS-Type)	B		
9	Y5XU98030	Guide & Tension Pulley Unit	B		
10	Y50H09000	Inner Plate (GS-Type)	B		
	Y50H10000	Inner Plate (SGS-Type)	B		
11	Y53M24400	Guide Pulley Bolt (M5 x 13.95)	A		
12	Y53M24000	Tension Pulley Bolt (M5 x 12.45)	A		

A: Same parts.

B: Parts are usable, but differ in materials, appearance, finish, size, etc.

Absence of mark indicates non-interchangeability.

Feb.-2013-3519

© Shimano Inc. A