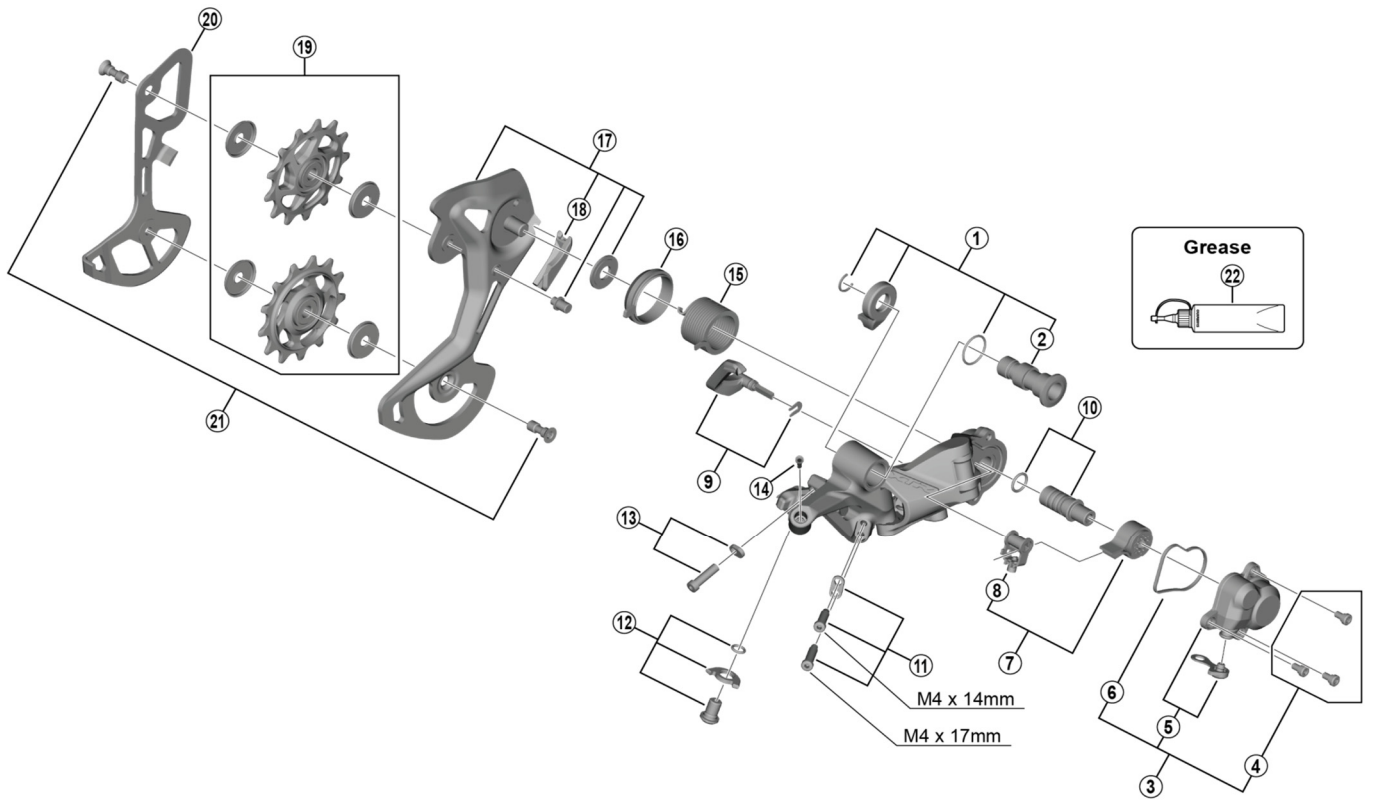


XTR Rear Derailleur

**RD-M9100-GS** 11 (Wide flange) / 12-speed

**RD-M9100-SGS** 12-speed



ITEM NO.	SHIMANO CODE NO.	DESCRIPTION	INTERCHANGEABILITY	
1	Y3FA98010	Bracket Axle Unit		
2	Y3FA42000	B-Axle		
3	Y3FA98020	P-Cover Unit		
4	Y5Y198070	P-Cover Bolt Set (3 pcs.)	A	
5	Y3FA98030	P-Cover & Cap		
6	Y3FA63000	P-Cover Packing		
7	Y3E498030	Stabilizer Unit	A	
8	Y3E498040	Cam Unit	A	
9	Y3FA98040	Switch Lever Unit & Fixing Plate		
10	Y5PV98060	P-Axle & O-Ring	A	
11	Y3FA98050	Stroke Adjusting Screws & Plate		
12	Y3FA98060	Cable Fixing Bolt Unit		
13	Y5PV98070	End Adjust Bolt (M4 x 14.1) & Plate	A	
14	Y5PV48000	Cover with tongue	A	
15	Y3FA55000	P-Tension Spring		
16	Y3FA62000	P-Seal Ring		
17	Y3FA98070	Outer Plate Assembly (GS)		
	Y3FA98080	Outer Plate Assembly (SGS)		
18	Y3FA59000	Bamper		
19	Y3FA98090	Tension & Guide Pulley Set		
20	Y3FA16000	Inner Plate (GS)		
	Y3FA26000	Inner Plate (SGS)		
21	Y5XX98130	Pulley Bolt (2 pcs.)	A	
* 22	Y04121000	New Grease for Stabilizer (Net. 50g)	A	

A: Same parts.

B: Parts are usable, but differ in materials, appearance, finish, size, etc.

Absence of mark indicates non-interchangeability.

Specifications are subject to change without notice.

Aug.-2018-4387B

© Shimano Inc. I

**SHIMANO**