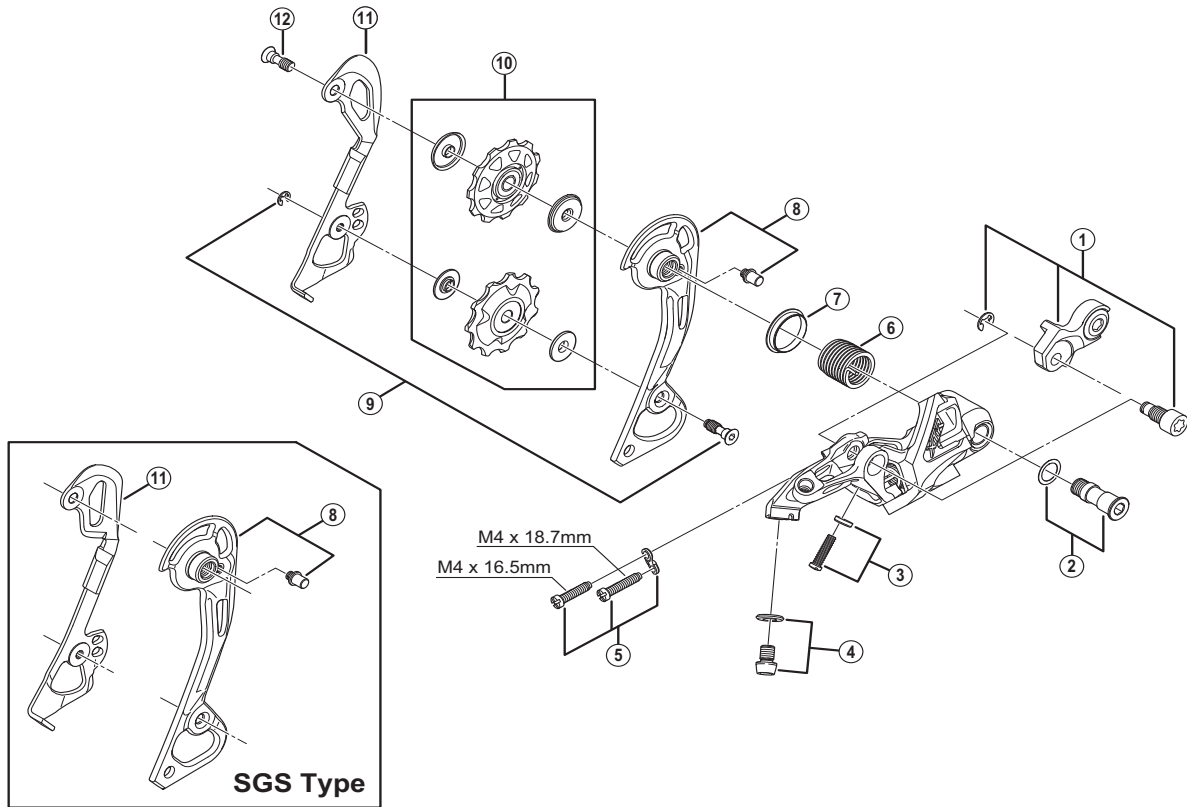


XTR Rear Derailleur (10-speed)

RD-M980-GS Long Cage

RD-M980-SGS Super Long Cage



ITEM NO.	SHIMANO CODE NO.	DESCRIPTION	RD-M985		RD-M972	
			INTERCHANGEABILITY			
1	Y5XD98130	Bracket Axle Unit	A			
2	Y5XC98030	P-Axle Assembly				
3	Y5XC98040	B-Tension Adjusting Screw (M4 x 15.1) & Plate	A			
4	Y5XC98050	Cable Fixing Bolt (M6 x 8) & Plate	A			
5	Y5WJ98020	Adjusting Screws & Plate	A	A		
6	Y5WJ27000	P-Tension Spring		A		
7	Y5UC14000	P-Seal Ring		A		
8	Y5XC98060	Outer Plate Assembly (GS-Type)				
	Y5XC98070	Outer Plate Assembly (SGS-Type)				
9	Y5XC98100	Tension Pulley Bolt & Stop Ring	A			
* 10	Y5XC98140	Guide & Tension Pulley Unit	A			
11	Y5XC09000	Inner Plate (GS-Type)	A			
	Y5XC10000	Inner Plate (SGS-Type)	A			
12	Y5WJ21000	Guide Pulley Bolt	A	A		

A: Same parts.

B: Parts are usable, but differ in materials, appearance, finish, size, etc.

Absence of mark indicates non-interchangeability.

Specifications are subject to change without notice.

Aug.-2015-3085B

© Shimano Inc. I

SHIMANO