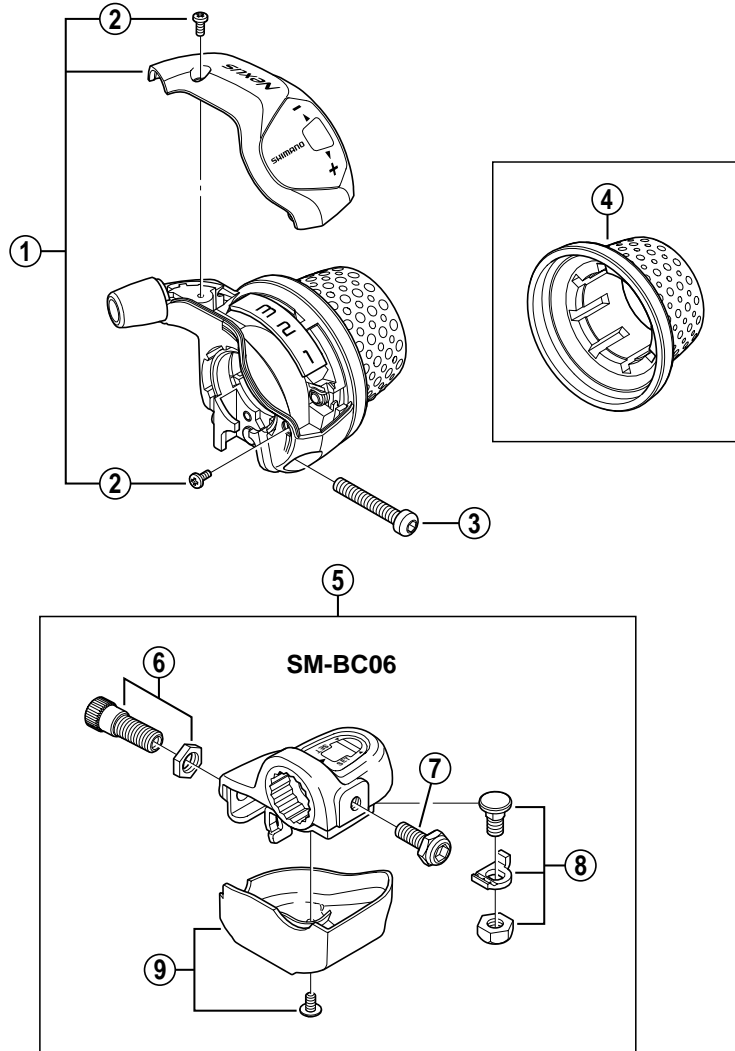


NEXUS Revo-Shift Lever (For 3-Speed)

SL-3S41E SL-3S42E



SL-8S20
SL-7S20
Bell Crank 4

ITEM NO.	SHIMANO CODE NO.	DESCRIPTION	INTERCHANGEABILITY
1	Y-6P1 98010	Cover & Fixing Screw	
2	Y-6F0 04000	Cover Fixing Screw	A A
3	Y-6F4 09000	Clamp Screw (M4 x 23.5)	A A
4	Y-65P 03110	Grip for SL-3S41E	
4	Y-6FD 14000	Grip for SL-3S42E	A B
5	Y-6P1 98030	SM-BC06 Bell Crank Unit	
6	Y-33S 98010	Cable Adjusting Bolt & Nut	A
7	Y-33S 74000	Bell Crank Body Fixing Bolt	A
8	Y-33S 98030	Inner Cable Fixing Bolt Unit	A
9	Y-6P1 98040	Bell Crank Cover & Fixing Screw	

A: Same parts.

B: Parts are usable, but differ in materials, appearance, finish, size, etc.

Absence of mark indicates non-interchangeability.

0707-2730

Specifications are subject to change without notice.

SHIMANO